



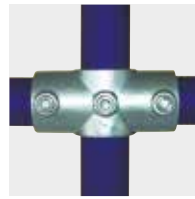
**TYPE 101 SHORT TEE**  
SIZE 1 - 5



**TYPE 104 LONG TEE**  
SIZE 1 - 5



**TYPE 116 MID CORNER**  
SIZE 1 - 5



**TYPE 119 MIDRAIL CROSS**  
SIZE 1 - 5



**TYPE 123 VARIABLE ELBOW 40°-70°**  
SIZE 2 - 4



**TYPE 124 VARIABLE ELBOW 105°-165°**  
SIZE 2 - 4



**TYPE 125 90° ELBOW**  
SIZE 1 - 5



**TYPE 125h SWIVEL ELBOW MINIMUM 75°**  
SIZE 2 - 4



**TYPE 128 TOP CORNER**  
SIZE 1 - 5



**TYPE 129 ADJUSTABLE TEE 30°-60°**  
SIZE 2 - 4



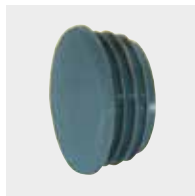
**TYPE 130 ANGLE CROSS 30°-45°**  
SIZE 2 - 4



**TYPE 131 WALL FLANGE**  
SIZE 1 - 5



**TYPE 132 BASE PLATE**  
SIZE 1 - 5



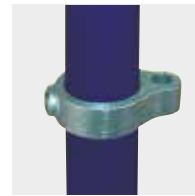
**TYPE 133 END CAP**  
SIZE 1 - 5



**TYPE 134 GROUND SOCKET**  
SIZE 2 - 4



**TYPE 135 CLAMP-ON TEE**  
SIZE 1 - 5



**TYPE 138 GATE EYE**  
SIZE 1 - 4



**TYPE 140 GATE PIN**  
SIZE 1 - 4



**TYPE 143 HANDRAIL BRACKET**  
SIZE 2 - 4



**TYPE 144 RAILING SUPPORT**  
SIZE 2 - 4



**TYPE 145 RAILING SUPPORT**  
SIZE 2 - 4



**TYPE 146 PALM FIXING**  
SIZE 2 - 4



**TYPE 147 SWIVEL TEE**  
SIZE 1 - 5



**TYPE 148 CORNER SWIVEL PAIR**  
SIZE 1 - 5



**TYPE 149 SLEEVE JOINT**  
SIZE 1 - 5



**TYPE 150 INTERNAL JOINT**  
SIZE 2 - 4



**TYPE 158 4-WAY CROSS**  
SIZE 1 - 5



**TYPE 160 CLAMP-ON CROSSOVER**  
SIZE 1 - 5



**TYPE 161 90° CROSSOVER**  
SIZE 1 - 5



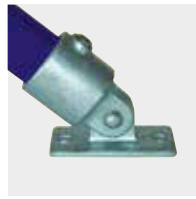
**TYPE 165 COMBINATION SOCKET**  
SIZE 1 - 4



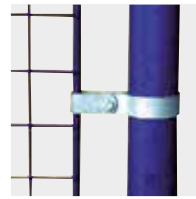
**TYPE I67 DOUBLE SWIVEL**  
SIZE 1 - 5



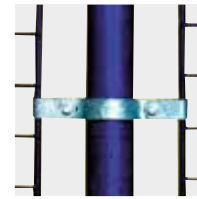
**TYPE I68 CORNER SWIVEL**  
SIZE 1 - 5



**TYPE I69 SWIVEL WALL PLATE**  
SIZE 1 - 5



**TYPE I70 SINGLE MESH CLIP**  
SIZE 1 - 5



**TYPE I71 DOUBLE MESH CLIP**  
SIZE 1 - 5



**TYPE I73 SINGLE SWIVEL**  
SIZE 1 - 5



**TYPE I74 SWIVEL STEP CROSS**  
SIZE 4 ONLY



**TYPE I75 SWIVEL STEP TEE**  
SIZE 4 ONLY



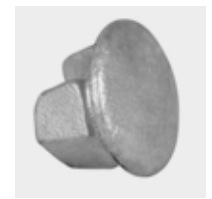
**TYPE I76 SIDE OUTLET TEE**  
SIZE 1 - 5



**TYPE I79 COLLAR**  
SIZE 1 - 5



**TYPE I82 HOOK**  
SIZE 1 - 4



**TYPE I84 METAL CAP**  
SIZE 3 - 4



**TYPE I85 EAVES FITTING 27.5°**  
SIZE 4 ONLY



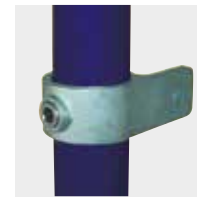
**TYPE I91 RIDGE FITTING 27.5°**  
SIZE 4 ONLY



**TYPE I92 BASEPLATE COVER**  
SIZE 2 - 4



**TYPE I98 FIXING BRACKET**  
SIZE 2 - 4



**TYPE I99 FIXING BRACKET**  
SIZE 2 - 4



**TYPE I201 RAMP TEE 0°-11°**  
SIZE 2 - 4



**TYPE I204 RAMP LONG TEE 0°-11°**  
SIZE 2 - 4



**TYPE I219 RAMP CROSS 0°-11°**  
SIZE 2 - 4



**TYPE I225 RAMP ELBOW 0°-11°**  
SIZE 2 - 4



**TYPE I232 RAMP BASEPLATE 0°-11°**  
SIZE 2 - 4



**TYPE I246 SIDE FIX BASE**  
SIZE 2 - 4



**RATCHET SET ALLEN KEYS**

## GALVANISED STEEL TUBE - SIZES

Tube conforms to BS EN 10255 and is available in 3m and 6m lengths



26.9 MM OD



33.7 MM OD



42.4 MM OD



48.3 MM OD



60.3 MM OD

DIAGRAMS NOT ACTUAL SIZE

To specify which size fitting you need, please use the following format: **I01-3** for size 3, **I04-4** for size 4, etc.